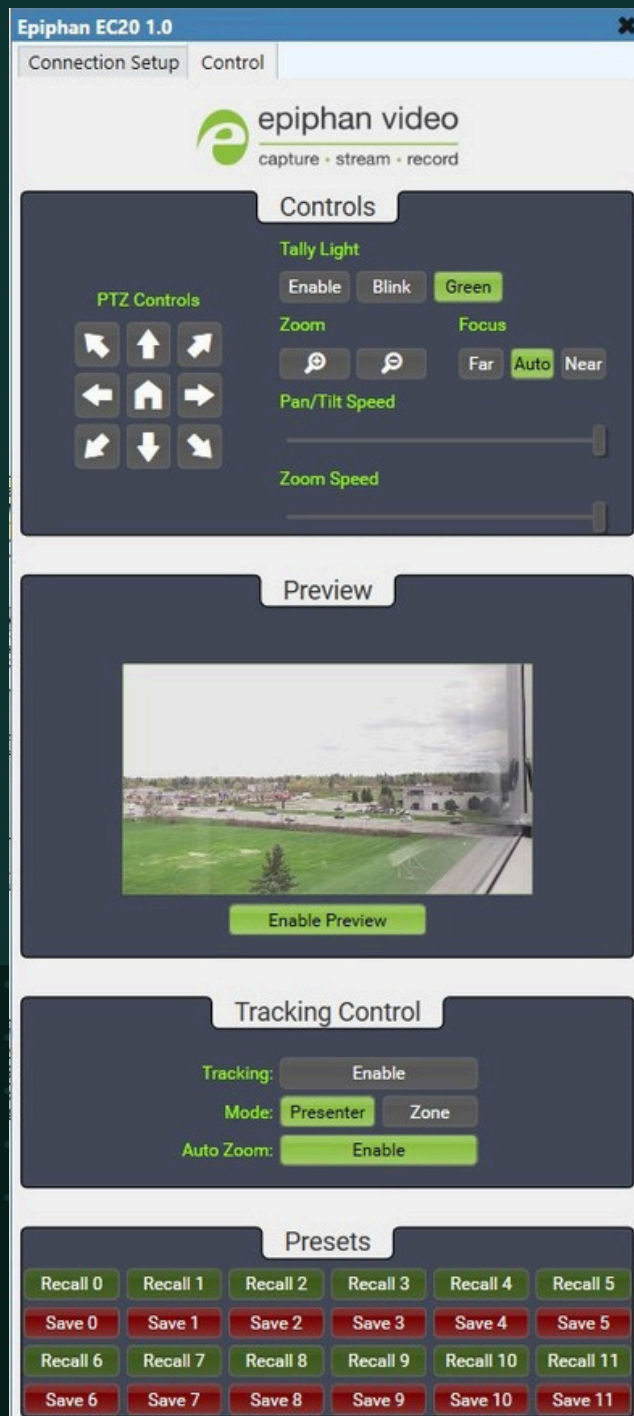


# Epiphan EC20

## Q-SYS Plugin

PTZ Control · Zoom & Focus · Tally Light  
Preset Management · AI Autotracking  
Full Q-SYS Control Pin Exposure

VERSION 1.0



# Overview

This plugin enables complete control of the **Epiphan EC20 PTZ Camera** from within Q-SYS Designer. Once connected, manage PTZ movement, zoom, focus, tally light, preset recall/save, and AI autotracking - all from a single Q-SYS control panel.

■ Support & Documentation: [support.epiphan.com/support/ec20-software-and-documentation](https://support.epiphan.com/support/ec20-software-and-documentation)

## SETUP

# Requirements

Q-SYS Designer	9.x or later
Network	EC20 reachable from Q-SYS Core (same LAN or routed)
Credentials	Camera admin username and password

## INSTALL

# Installing the Plugin

■ Full guide: [support.qsys.com/en\\_US/application-notes/how-to-%7C-installing-custom-plugins-to-q-sys-designer](https://support.qsys.com/en_US/application-notes/how-to-%7C-installing-custom-plugins-to-q-sys-designer)

- 1 Double click the **epiphan-ptz.qplugx** file.
  - You should receive a dialogue asking if you'd like to install the plugin.
- 2 Click "Yes" to install
- 3 Restart Q-SYS Designer if it was already open.
- 4 Search for "**Epiphan EC20**" in the component library and drag it into your design.

# Connection Setup

Open the component in Q-SYS Designer and navigate to the **Connection Setup** tab. Enter the camera's network details and credentials. The **Status** section at the bottom confirms the connection.

<b>IP Address</b>	EC20 IP address on your network
<b>Port</b>	HTTP port - default: 80 ( <b>443 disabled in v.1</b> )
<b>Username</b>	Admin username (default: admin)
<b>Password</b>	Admin password

## Status indicators

- Connection: OK – Connected
- Firmware Version
- Serial Number
- MAC Address

### TIP

Ensure the EC20 and Q-SYS Core share a routed network path and that port 80 is not blocked by a firewall.

The screenshot displays the Epiphan EC20 1.0 interface with two tabs: 'Connection Setup' and 'Control'. The 'Connection Setup' tab is active, showing the 'Setup' section with input fields for IP Address (10.2.2.249), Port (80), Username (admin), and Password (masked with asterisks). Below this is the 'Status' section, which features a green 'Connection' indicator showing 'OK - Connected'. It also displays the Firmware Version (OC v3.3.40 - ARM 6.1.84SEpiph), Serial Number, and MAC Address. The interface is branded with the Epiphan video logo and the tagline 'capture • stream • record'.

Connection Setup tab

# Control Panel

Switch to the **Control** tab to access all camera functions from a single panel. Sections include PTZ, Zoom/Focus, Tally Light, Preview, Tracking, and Presets.

## PTZ Controls

Directional pad for pan/tilt. Centre button returns to **Home**. Adjust speed with the **Pan/Tilt Speed** slider.

## Zoom & Focus

Zoom In/Out buttons with **Zoom Speed** slider. Focus mode: **Far**, **Auto**, or **Near**.

## Tally Light

Set state: **Enable**, **Blink**, or colour (**Green/Red**). Indicates live or standby status to the presenter.

## Preview

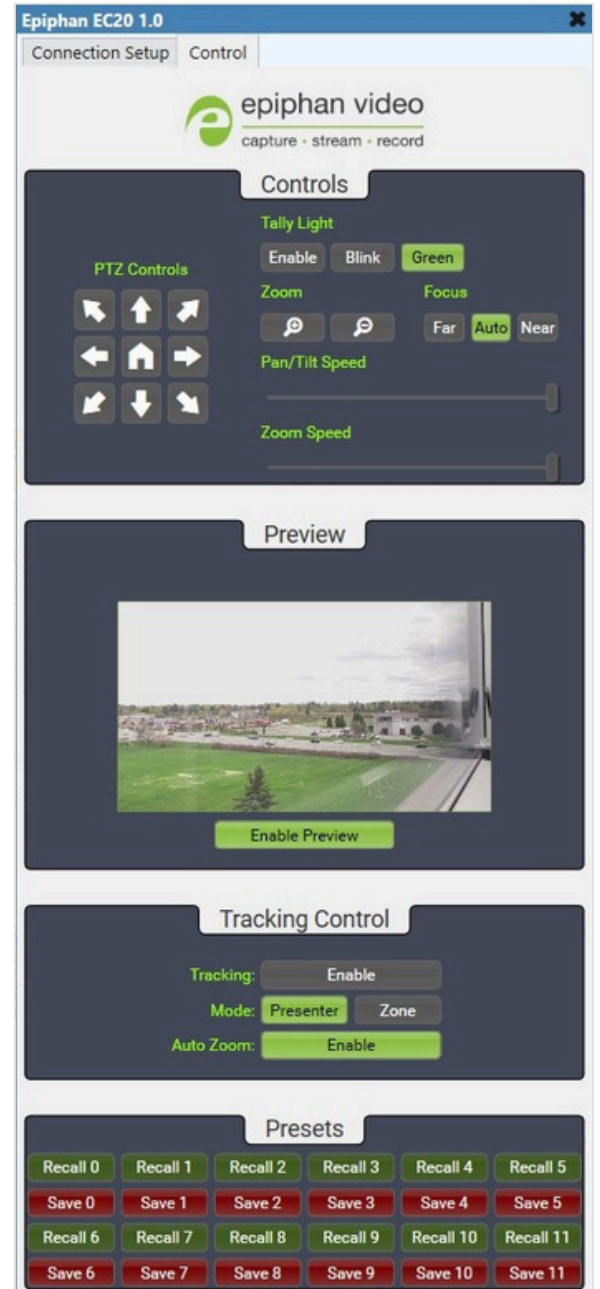
Enable a live MJPEG camera preview directly inside the Q-SYS plugin window.

## Tracking Control

AI autotracking on/off. Mode: **Presenter** or **Zone**. **Auto Zoom** toggle.

## Presets (0–11)

Recall or Save camera positions. **Recall** moves the camera; **Save** stores the current position.



Control tab

# Properties & Control Pins

The plugin exposes a comprehensive set of control and status pins for scripting, control surfaces, and external logic within Q-SYS Designer.

## Component Properties

Number of Presets	Modified in properties
Video FPS	Preview stream frame rate
Show Debug	Enable debug output - Yes / No

## Control Pin Categories

### Controls

Focus Auto/Far/Near · Pan/Tilt Speed · PTZ  
Up/Down/Left/Right/Diagonals · PTZ Home · Zoom In/Out · Zoom  
Speed · Tally Light Action/Colour/Enable · Preview Enable

### Presets

Recall 0–11 · Save 0–11 (default number)

### Setup

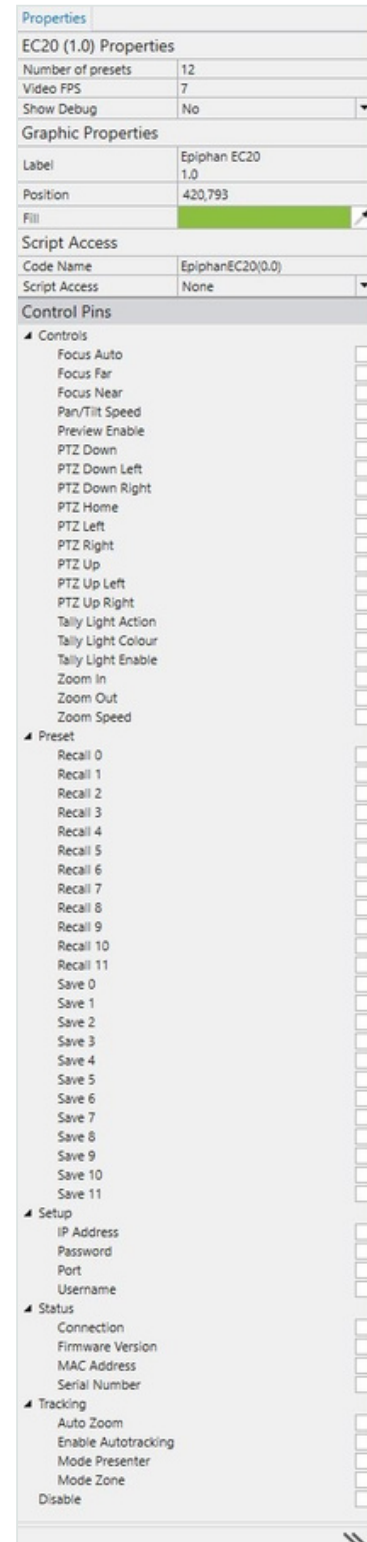
IP Address · Password · Port · Username

### Status

Connection · Firmware Version · MAC Address · Serial Number

### Tracking

Auto Zoom · Enable Autotracking · Mode Presenter · Mode Zone ·  
Disable



Properties panel

# Troubleshooting

## Status: Not Connected

Verify IP address, port, and credentials. Confirm the Q-SYS Core has a routed network path to the EC20 and that port 80 is accessible. **443 is disabled in v.1 release of this plugin**

## Plugin not visible in Designer

Confirm the **.qplugx** file is in the correct Plugins folder and that Q-SYS Designer has been fully restarted after copying the file.

## Preview not loading

Check that port 80 is open from the Core to the EC20. Enable the preview. Some networks block MJPEG streams consult your network/IT team.

## PTZ controls unresponsive

Confirm the Connection status shows **OK – Connected**. Try accessing the EC20 web interface directly to verify the camera is operational.

## Presets not saving

Ensure the camera is connected and responsive. Attempt saving a preset from the EC20 web interface to isolate whether the issue is network or plugin. **Requires EC20 firmware 3.3.40**

### Support & Docs

[epiphan.com/support/ec20-software-and-documentation](https://epiphan.com/support/ec20-software-and-documentation)

### Contact

[support@epiphan.com](mailto:support@epiphan.com)

### Plugin Credit

Developed by Carrier Labs

™ and © 2026 Epiphan Systems Inc. All trademarks are property of their respective owners.